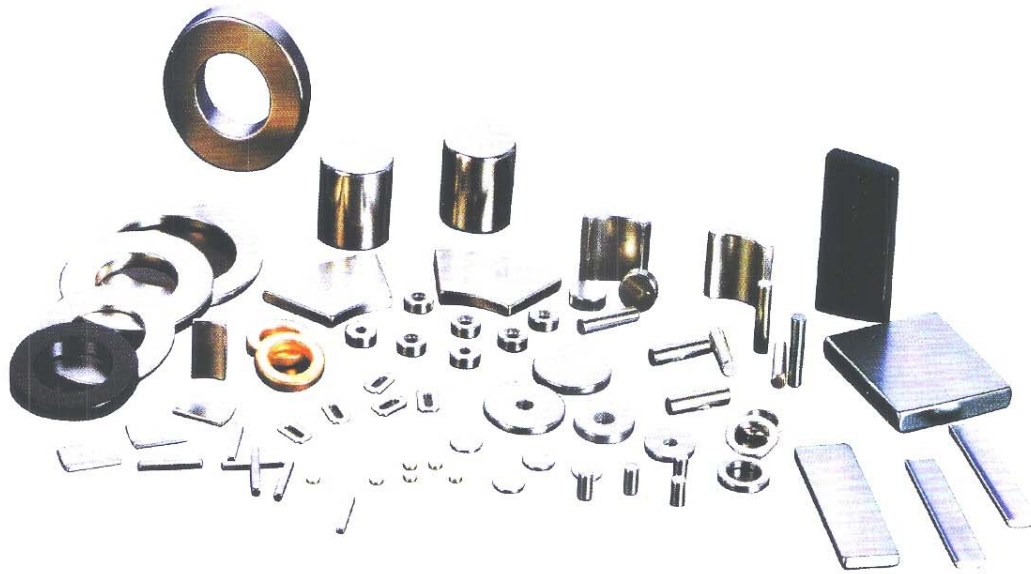




产品展示 Product Exhibition

烧结钕铁硼 Sintered NdFeB

烧结钕铁硼: 是金属钕、铁、硼和其他微量金属元素构成的合金磁体, 是磁性最强的永磁体。
Sintered Ndfeb Magnet is mainly made of Neocymium, Iron and Boron.



烧结钕铁硼生产工艺流程图 Production Chart of Sintered NdFeB



特点

高剩磁
高矫顽力

高能积、高性能价格比等特性

容易加工成各种尺寸

Characteristics

High remanence

High coercive force

High energy product and high performance/cost ratio

Easily formed into various sizes.

应用

直流电机

扬声器

线性电机

核磁共振

医疗保健

其它

Application

DC motors

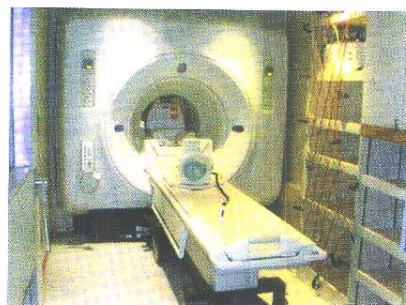
Speakers

Linear Motors

MRI

Medical and health products

Others





产品介绍

可按客户要求设计制造各类磁产品：

- 1) 各种高性能牌号钕铁硼 (Nd-Fe-B) 磁材N50, N48M, N45H, N42SH, 35UH, 33EH等。
- 2) 各种方型、圆柱型、环型和瓦片等常规产品及球型、锥型、面包型、草帽型等异型产品。
- 3) 超薄壁产品，高精度产品，高防腐产品。

技术专长

超薄壁深孔机加工精度： ≤ 0.03 mm

同心度： ≤ 0.02 mm

深孔产品表面处理防腐能力可达到

- 1) 盐雾实验：100h以上
- 2) PCT实验：100h以上
- 3) 湿热实验：500h以上

Products Introduction

We can design and produce multifarious magnetic products according to customers' requirement:

- 1) All kinds of shop sign with high quality: Nd-Fe-B magnetic materials N50, N48M, N45H, N42SH, 35UH, 33EH etc..
- 2) All sorts of conventional products, including quadrate, column form, circularity, tiles and so on; and some other unconventional products, such as spheroid, taper, bread-shaped, strawhat-shaped and so on.
- 3) Ultra-thin products, high-precision products, high-rotproof products.

Technique specialty

The machining precision of the Ultra-thin deep punch machine:
 ≤ 0.03 mm

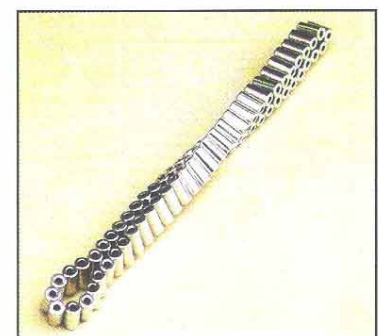
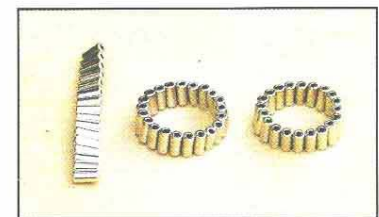
Concentric tolerance: ≤ 0.02 mm

The rotproof capability of the surface disposing of the deep punch products:

- 1) The salt-fog experiment: upward 100h
- 2) The PCT experiment: upward 100h
- 3) The wet and hot experiment: upward 500h



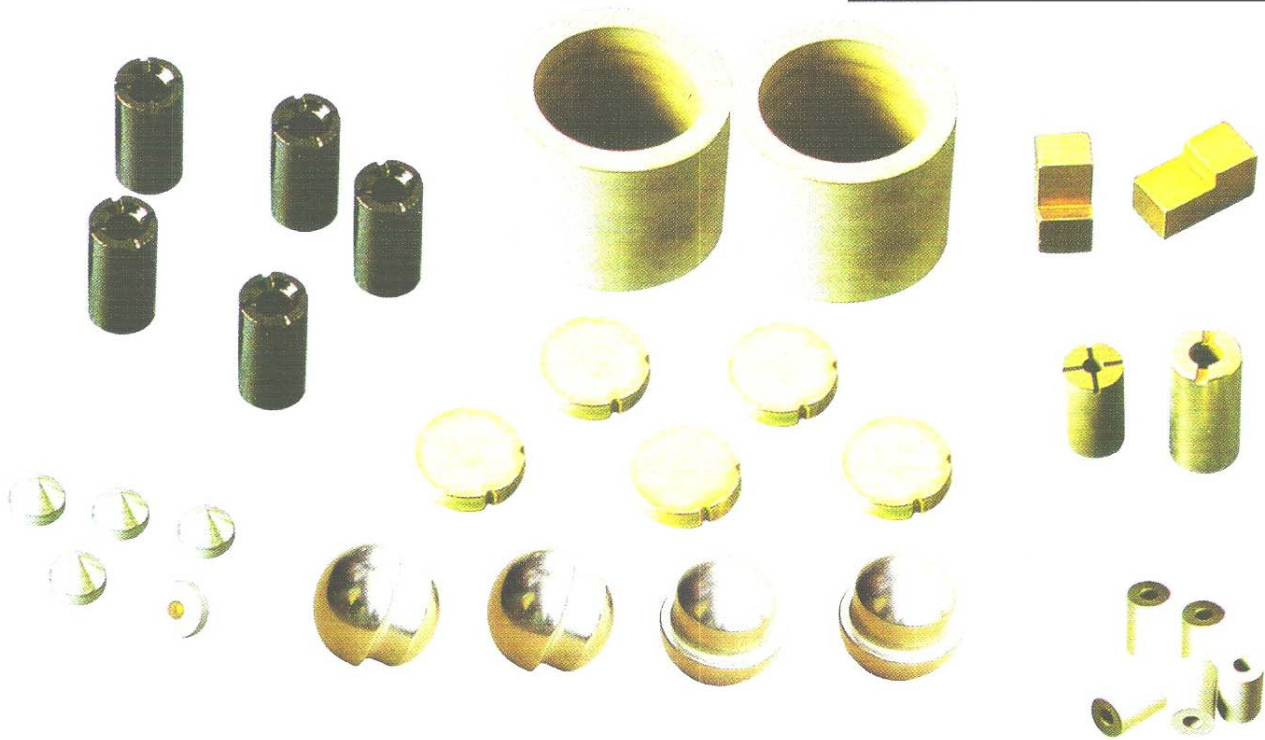
空心杯手机振动磁钢
Mobile vibrancy alnico



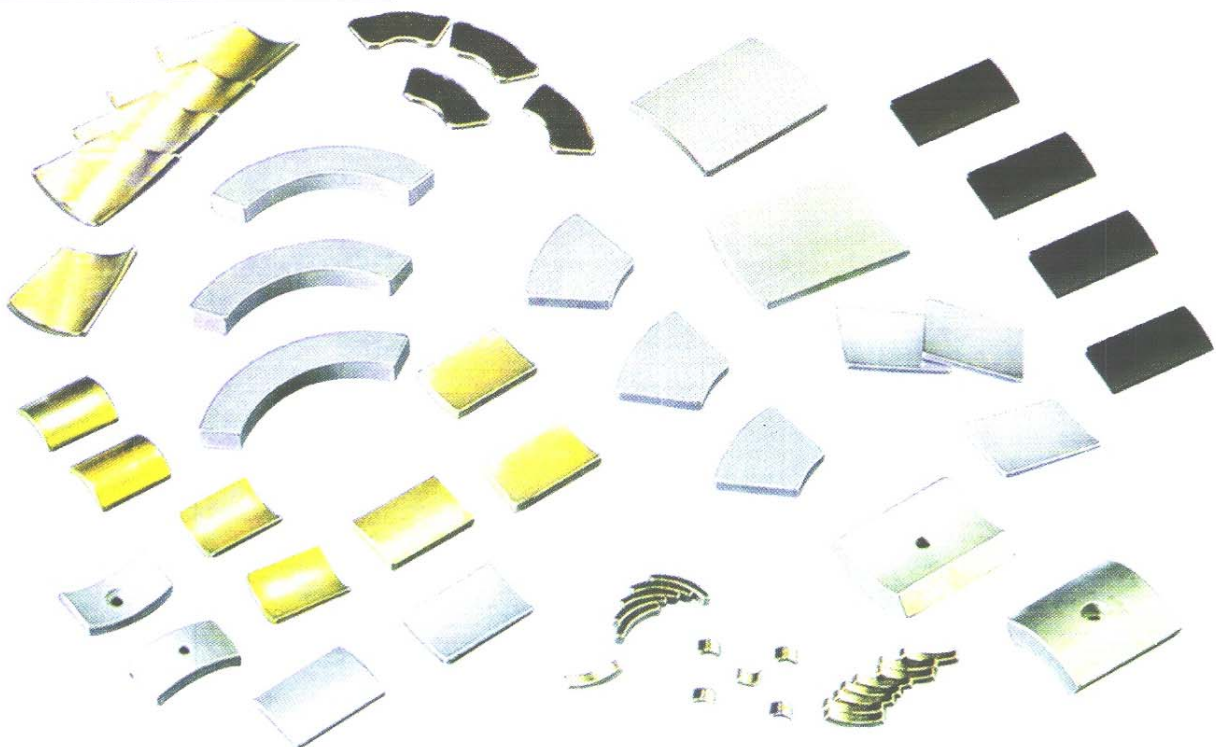


产品展示 Product Exhibition

钕铁硼系列产品
Series of NdFeB



钕铁硼系列产品
Series of NdFeB



产品展示 Product Exhibition



烧结钕铁硼的磁性能 Magnetic and Physical Properties of Sintered NdFeB Magnet

牌号 Grades	剩磁 Remanence		矫顽力 Coercive Force		内禀矫顽力 Intrinsic Coercivity		最大磁能积 Maximum Energy Product		居里温度 Curie Temp.	最高工作温度 Temp. Coefficient
	Br		Hcb		Hcj		(BH)max		TC	TW
	T	KGs	KA/m	Koe	KA/m	Koe	KJ/m ³	MGOe	°C	°C
N33	1.13-1.18	11.3-11.8	≥836	≥10.5	≥955	≥12	247-263	31-33	310	≤80
N35	1.18-1.23	11.8-12.3	≥868	≥10.8	≥955	≥12	263-287	33-36	310	≤80
N38	1.22-1.28	12.2-12.8	≥899	≥10.8	≥955	≥12	287-310	36-39	310	≤80
N40	1.26-1.31	12.6-13.1	≥923	≥11.6	≥955	≥12	302-326	38-41	310	≤80
N42	1.28-1.34	12.8-13.4	≥923	≥11.6	≥955	≥12	318-342	40-43	310	≤80
N45	1.34-1.39	13.4-13.9	≥876	≥11.0	≥955	≥12	342-366	43-46	310	≤80
N48	1.38-1.42	13.8-14.2	≥836	≥10.5	≥876	≥11	358-390	45-48	310	≤80
N50	1.40-1.46	14.0-14.6	≥836	≥10.5	≥876	≥11	374-406	47-51	310	≤80
N35M	1.18-1.23	11.8-12.3	≥868	≥10.9	≥1114	≥14	263-287	33-36	320	≤100
N38M	1.22-1.28	12.2-12.8	≥899	≥11.3	≥1114	≥14	287-310	36-39	320	≤100
N40M	1.26-1.31	12.6-13.1	≥923	≥11.6	≥1114	≥14	302-326	38-41	320	≤100
N42M	1.28-1.34	12.8-13.4	≥923	≥11.6	≥1114	≥14	318-342	40-43	320	≤100
N45M	1.34-1.39	13.4-13.9	≥876	≥11.0	≥1114	≥14	342-366	43-46	320	≤100
N33H	1.14-1.19	11.4-11.9	≥836	≥10.5	≥1353	≥17	247-270	31-34	330	≤120
N35H	1.18-1.23	11.8-12.3	≥868	≥10.9	≥1353	≥17	263-287	33-36	330	≤120
N38H	1.22-1.28	12.2-12.8	≥899	≥11.3	≥1353	≥17	287-310	36-39	330	≤120
N40H	1.26-1.31	12.6-13.1	≥923	≥11.6	≥1353	≥17	302-326	38-41	330	≤120
N42H	1.28-1.34	12.8-13.4	≥923	≥11.6	≥1353	≥17	318-342	40-43	330	≤120
N30SH	1.08-1.13	10.8-11.3	≥810	≥10.2	≥1592	≥20	223-247	28-31	340	≤150
N33SH	1.14-1.19	11.4-11.9	≥836	≥10.5	≥1592	≥20	247-270	31-34	340	≤150
N35SH	1.18-1.23	11.8-12.3	≥868	≥10.9	≥1592	≥20	263-287	33-36	340	≤150
N38SH	1.22-1.28	12.2-12.8	≥899	≥11.3	≥1592	≥20	287-310	36-39	340	≤150
N40SH	1.26-1.31	12.6-13.1	≥923	≥11.6	≥1592	≥20	302-326	38-41	340	≤150
N28UH	1.03-1.09	10.3-10.9	≥764	≥9.60	≥1990	≥25	207-231	26-29	350	≤180
N30UH	1.09-1.14	10.9-11.4	≥812	≥10.2	≥1990	≥25	223-247	28-31	350	≤180
N33UH	1.13-1.17	11.3-11.7	≥852	≥10.7	≥1990	≥25	247-263	31-33	350	≤180
N35UH	1.17-1.24	11.7-12.4	≥868	≥10.9	≥1990	≥25	263-295	33-37	350	≤180
N28EH	1.03-1.09	10.3-10.9	≥780	≥9.80	≥2388	≥30	207-231	26-29	380	≤200
N30EH	1.08-1.13	10.8-11.3	≥812	≥10.2	≥2388	≥30	223-247	18-31	380	≤200
N33EH	1.14-1.21	11.4-12.1	≥852	≥10.7	≥2388	≥30	247-279	31-35	380	≤200
N35EH	1.17-1.24	11.7-12.4	≥868	≥10.9	≥2388	≥30	263-295	33-37	380	≤200
N38EH	1.22-1.29	12.2-12.9	≥915	≥11.5	≥2388	≥30	287-318	36-40	380	≤200
N30AH	1.08-1.15	10.8-11.5	≥804	≥10.1	≥2786	≥35	223-255	28-32	380	≤230
N33AH	1.14-1.21	11.4-12.1	≥852	≥10.7	≥2786	≥35	247-279	31-35	380	≤230

烧结钕铁硼表面处理 NdFeB Surface Coating

镀锌	镀镍	镀镍铜镍	镀金	镀银	环氧	磷化	帕利灵	其它
Zinc-coating	Nickel-coating	Nickel-Copper-Nickel-coating	Aurum-coating	Silver-coating	Epoxy-coating	Phosphating	Parylene	Others